

ROV Operated Valves

A part of Witec ROV Operated Valve Series



Key Features

- Excess torque not transferred to valve stem
- Xylan surface treated Alu Actuator
- Stainless Steel Valves
- Wide Range of fluid compatibility
- Service and user friendly with custom design available
- 2, 3 and 4-way valve types available

Product Description

The Witec ROV Operated Valve is a field proven component used in subsea systems all over the world. Available in a number of configurations and valve / port sizes.

The ROV Operated Rotary Control Valves are designed to meet the requirements for use in in the most demanding harsh subsea environments. Our standard range of rotary control valves is available at pressure ratings up to 20,000PSI (1379Bar) and water depths to 3000 meters (10.000Ft).



Specifications

Type

Panel Mounted ROV Operated Valve

Part no.

WTC 2000-series

Fluid Compatibility

Mineral Oil, Water Based Glycol & Seawater

Operating Temperature

-10°C / + 70°C (14°F / 158°F)

Actuator Body Material

Alu6068 (Xylan Surface Treated)

Valve Body Material

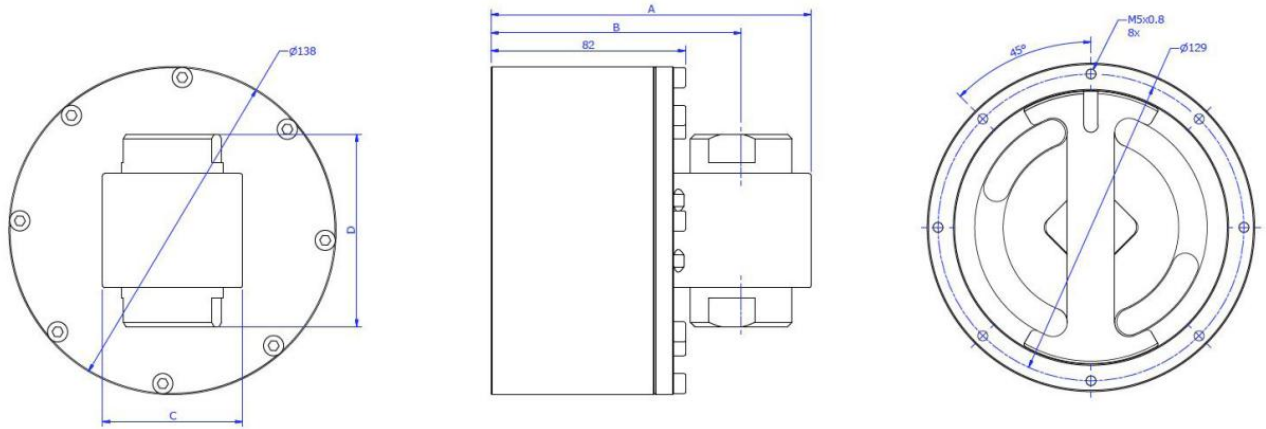
Stainless Steel or Aluminium

ROV Operated Valves

A part of Witec ROV Operated Valve Series



Dimensions



Type

			A	B	C	D	E
WTC2006	Alu ROV Actuator	1/4" Ball Valve 500Bar	110	96,5	26	69	1/4" BSP
WTC2007	Alu ROV Actuator	3/8" Ball Valve 500Bar	115	97,5	32	72	3/8" BSP
WTC2008	Alu ROV Actuator	1/2" Ball Valve 500Bar	117	98	35	83	1/2" BSP
WTC2009	Alu ROV Actuator	3/4" Ball Valve 350Bar	134	109,5	49	95	3/4" BSP
WTC2010	Alu ROV Actuator	1" Ball Valve 350Bar	142	112,5	58	113	1" BSP
WTC2012	Alu ROV Actuator	1-1/4" Ball Valve 350Bar	142	112,5	58	120	1-1/4" BSP
WTC2003	Alu ROV Actuator	1/4" - MP Valve 20K PSI	159	144	25	165	1/4" MP F
WTC2004	Alu ROV Actuator	3/8" - MP Valve 20K PSI	159	144	25	165	3/8" MP F
WTC2012	Alu ROV Actuator	9/16" - MP Valve 20K PSI	159	144	25	165	9/16" MP F
WTC2002	Alu ROV Actuator	3-Way Ball Valve L-Bore - 3/8" BSP 500 Bar	128	101	115	115	3/8" BSP
WTC2011	Alu ROV Actuator	3-Way Ball Valve L-Bore - 1/2" BSP 400 Bar	138	107	136	136	1/2" BSP
WTC2001	Alu ROV Actuator	4-Way Ball Valve X-Bore - 3/8" BSP 500 Bar	128	101	115	115	3/8" BSP